



Grow thru knowledge  
Xtend beyond technology

Grow thru Knowledge, Xtend beyond Technology

GeneXus is a powerful multi-platform tool for developing mission-critical applications.

GeneXus enables the incremental development of business applications, regardless of the production platform.

GeneXus generates the entire application and automatically maintains the data model, data and applications.

Thousands of customers worldwide use GeneXus to develop complex mission-critical applications with large databases, ranging from centralized to distributed and Web-based applications.

GeneXus enables your organization to develop mission-critical applications based on your exclusive know-how of the business, regardless of the selected platform.

## | Key Benefits

### Reduce your time-to-market

*Turn your knowledge of the business into mission-critical applications in record time!*

- Validate your requirements using fully functional prototypes at design time.
- Generate your database and programs on your platform of choice (.Net, Java/J2EE, etc.).
- When your requirements change, GeneXus performs an automatic impact analysis and propagates the changes.

### Enjoy maximum flexibility with minimum total cost of ownership

*Apply your resources efficiently!*

- Design and develop the systems that you need today.
- Add new functionalities as your requirements evolve.

### Focus on your business

*Use the exclusive know-how within your organization to develop mission-critical applications*

- Have your IT staff develop systems tailored to your business.
- Don't waste money on training staff every time a new technology is released.

### Generate and deploy your applications on your platforms of choice

*Always use the best technology available*

- Generate your systems on multiple platforms.
- Migrate your systems to new technology platforms with minimum cost.
- No runtimes.

### Leverage your existing IT infrastructure

*Get the functionality that you need from your current systems!*

- Seamlessly integrate new applications into legacy systems.
- Build state-of-the-art, powerful Business Intelligence, Reporting and Web-based solutions.
- Benefit from GeneXus' Web Services and XML features.

## | Technologies

### Platforms

#### Execution Platforms

Java/J2EE, .NET, .NET Compact Framework, Ruby.

#### Operating Systems

IBM OS/400, LINUX, UNIX, Windows NT/2000/2003/2008 Servers, Windows NT/2000/XP/Vista/7, Windows Mobile.

#### Internet

Java/J2EE, ASP, .Net, CGI, HTML, Web Services, Ruby.

#### Database Management Systems

IBM DB2, Informix, Microsoft SQL Server, Microsoft SQL Server CE (Compact Edition), MySQL, Oracle, PostgreSQL.

#### Languages

Java/J2EE, C#, Ruby, COBOL, RPG, Visual Basic, Visual FoxPro.

#### Web Servers

Microsoft IIS, Apache, WebSphere, etc.

#### Multiple Architectures

Multi-tier, Web-based, client/server and centralized (AS/400, iSeries, System i) architectures.

#### Business Intelligence and Workflow Tools

Reporting, Data Warehousing and Workflow solutions for all the supported platforms.

**Artech**<sup>™</sup>  
www.genexus.com

MONTEVIDEO - URUGUAY	Av. Italia 6201 - Edif. Los Pinos, P1 Ruta 8 Km. 17.500 - Edif. @3 Of. 205	(598) 2601 2082 (598) 2518 2870
CHICAGO - USA	400 N. Michigan Ave. Suite 1600	(1 312) 836 9152
SÃO PAULO - BRASIL	Rua Samuel Morse 120 Conj. 141	(55 11) 5502 6722
CIUDAD DE MÉXICO - MÉXICO	Calle Leibnitz N° 20, desp. 801	(52 55) 5255 4733
TOKYO - JAPAN	Tk Gotanda Bldg. 303-2	(81 3) 5793 5481

# | Key Features

<b>Knowledge-based Design</b>	<ul style="list-style-type: none"><li>• Application design based on users' views.</li><li>• Completely automatic design of the data model.</li><li>• Platform-independent design and prototyping.</li></ul>
<b>Automatic Development</b>	<ul style="list-style-type: none"><li>• Fully automatic generation of databases and applications.</li><li>• Automatic generation and maintenance of application documentation.</li></ul>
<b>Automatic Maintenance</b>	<ul style="list-style-type: none"><li>• Fully automatic maintenance of the database and applications.</li><li>• Automatic migration of data to new schema.</li></ul>
<b>Multi-platform development and deployment</b>	<ul style="list-style-type: none"><li>• Java/J2EE, .Net and .Net Compact Framework, Ruby, Client/Server, AS/400, iSeries, i5, System i.</li></ul>

## Design

### Knowledge-based

GeneXus provides a simple way to design applications using the exclusive knowledge within your organization. This knowledge is stored in a Knowledge Base made up of familiar objects such as Transactions, Web Panels and Reports.

### Data Model Generation

GeneXus infers the best data model and automatically creates the best relational database to support it.

### Prototyping

You can create functional prototypes of your application at design time, ensuring full compliance with your customers' or users' requirements. All prototypes are functionally equivalent to the final application.

### Workflow

GeneXus GXflow is a tool for visually designing business processes, fully integrated into GeneXus. GXflow's components comply with the BPMN standard established by the *Workflow Management Coalition*.

## Development

### Automatic generation of applications

GeneXus automatically creates and maintains a normalized database, and all the native code for the entire application on your platform of choice.

**GeneXus Generators:** .Net, .Net Mobile, Java, Ruby, Client/Server (Visual Basic and Visual FoxPro), RPG and COBOL.

**Supported DBMS:** IBM DB2, Informix, Microsoft SQL Server, MySQL, Oracle, PostgreSQL.

## Maintenance

### Update your Knowledge Base

When your requirements change, you only have to update your Knowledge Base.

### Impact Analysis

GeneXus creates reports called impact analysis for your database and GeneXus applications.

### Fully automatic maintenance of your database and applications

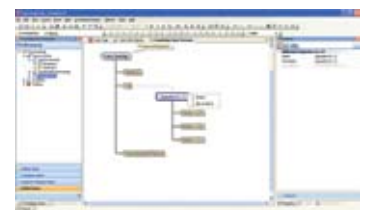
GeneXus generates the programs to convert the database (structure and content). In addition, it creates new applications as required and regenerates those that need changing.

### Traceability

Management of development lines, change log, and frozen versions.

### Teamwork

Through interaction with GeneXus Server, which simplifies and adds productivity to the knowledge integration process.



### Need More Information?

Visit our web site: [www.genexus.com](http://www.genexus.com)

Download a free trial version: [www.genexus.com/trial](http://www.genexus.com/trial)

Find a distributor near you: [www.genexus.com/distributors](http://www.genexus.com/distributors)

Take the GeneXus X Basic Course [www.gxtechnical.com/basiccourse](http://www.gxtechnical.com/basiccourse)

Contact us at [info@genexus.com](mailto:info@genexus.com) for more information or to request a demo.

